

VZORNÍK POTAHOVÝCH LÁTEK

DINO

E

Composition/Složení/Zusammensetzung:

93% Wool, 7% Polyamide

Weight/Váha/Gewicht: 460 g/lm

Width/Šířka/Breite: 140 cm

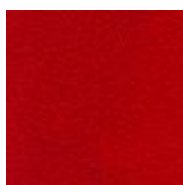
Abrasion resistance/Oděruvzdornost/Scheuerfestigkeit:

Martindale 200 000 cycles, EN ISO 12947-2

Pilling/Žmolkování/Pilling: 5, UNI EN ISO 12945/1

Flammability/Ohnivzdornost/Feuersicherheit:

EN 1021/1-2, BS 5852 0&1



D4011



D6003



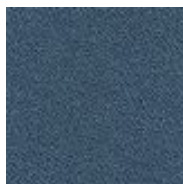
D6016



D6098



D7008



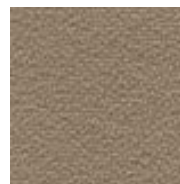
D8010



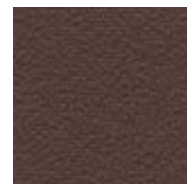
D8033



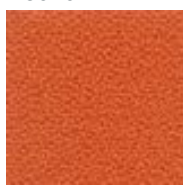
D4017



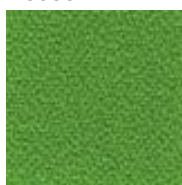
D1008



D2036



D3012



D7048

FLORIDA

E

Composition/Složení/Zusammensetzung:

100% Polyester

Weight/Váha/Gewicht: 570 g/lm

Width/Šířka/Breite: 140 cm

Abrasion resistance/Oděruvzdornost/Scheuerfestigkeit:

Martindale 85 000 cycles

Light fastness/Stálobarevnost na světlo/Lichtechtheit: 6
Fastness to rubbing/Stálobarevnost v otěru/Reibechtheit: 4-5

Pilling/Žmolkování/Pilling: 5

Flammability/Ohnivzdornost/Feuersicherheit:

B1 (DIN 4102), M1 (NF P 92501-7), CRIB 5 (BS 5852 part II)



F3082



F4028



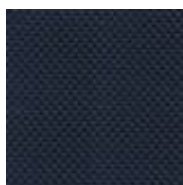
F5096



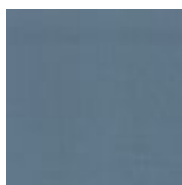
F6071



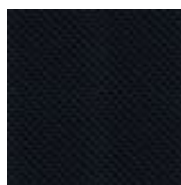
F7025



F8017



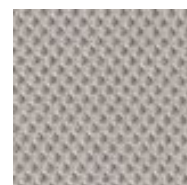
F8032



F8033



F5003



F8006

VZORNÍK POTAHOVÝCH LÁTEK

STYLE

F

Composition/Složení/Zusammensetzung:

100% Polyester

Weight/Váha/Gewicht:

530 g/m

Width/Šírka/Breite:

150 cm

Abrasion resistance/Oděruvzdornost/Scheuerfestigkeit:

Martindale 80 000 cycles BS EN ISO 12947-2

Light fastness/Stálobarevnost na světle/Lichtechtheit:

5 BS EN ISO 105-B02

Fastness to rubbing/Stálobarevnost v otěru/Reibechtheit:

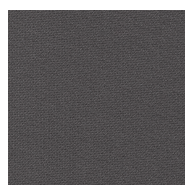
4 - 5 EN ISO 105x12

Pilling/Žmolkování/Pilling:

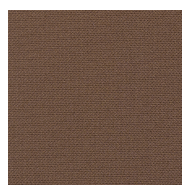
4 - 5 BS EN ISO 12945-2

Flammability/Ohnivzdornost/Feuersicherheit:

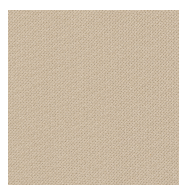
Önorm B 3825EN 1021 1&2



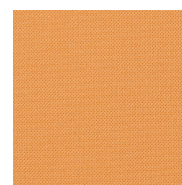
60025



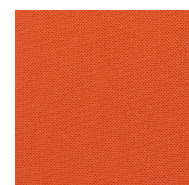
61077



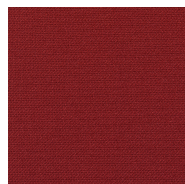
61078



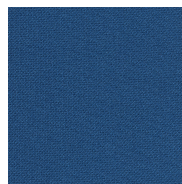
63033



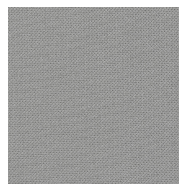
63034



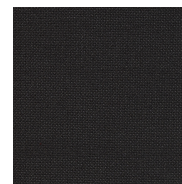
64092



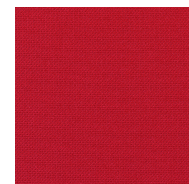
66062



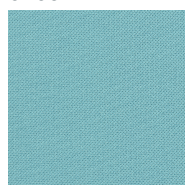
60011



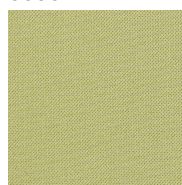
60999



64089



66063



68054

VZORNÍK POTAHOVÝCH LÁTEK

QUEEN

F

Composition/Složení/Zusammensetzung:

100% Polyester FR Trevia CS

Weight/Váha/Gewicht: 370 g/lm

Width/Šírka/Breite: 140 cm

Abrasion resistance/Oděruvzdornost/Scheuerfestigkeit:

Martindale 60 000 cycles

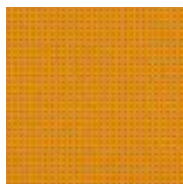
Fastness to rubbing/Stálobarevnost v otěru/Reibechtheit: 4/5, UNI EN ISO 105-X12

Light fastness/Stálobarevnost na světle/Lichtechtheit: 6, UNI EN ISO 105-B02

Pilling/Žmolkování/Pilling: 5, UNI EN ISO 12945/1

Ohnivzdornost/flammability:

(GB) CRIB 5, (D) B1 DIN 4102,(I) C1 EN 1021/1-2



Q3508



Q6080



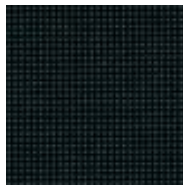
Q6516



Q7519



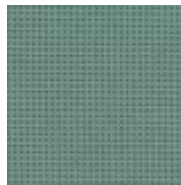
Q8508



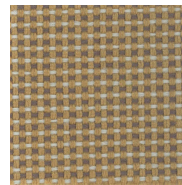
Q8510



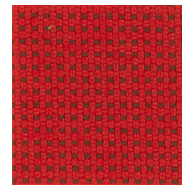
Q8511



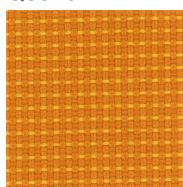
Q8514



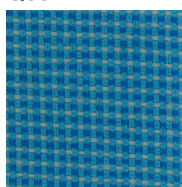
Q2514



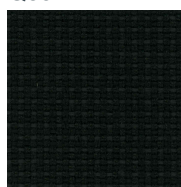
Q4528



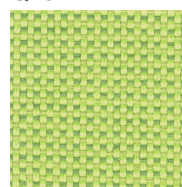
Q4530



Q6507



Q8534



Q9704

XTREME

F

Složení/composition:
100% Polyester Xtreme FR

Váha/weight: 434 g/lm

Šírka/width: 140 cm

Oděruvzdornost/abrasion resistance:
Martindale 100 000 cycles

Ohnivzdornost/flammability:
(GB) CRIB 5, (D) B1 EN, 1021/1-2



E9



E21



E30



E46



E76



E79



E81



E252

VZORNÍK POTAHOVÝCH LÁTEK

URBAN plus

F

Složení/composition:
100% Polyester Xtreme FR

Váha/weight: 448 g/lm

Šířka/width: 140 cm

Oděruvzdornost/abrasion resistance:
Martindale 90 000 cycles

Ohnivzdornost/flammability:
(GB) CRIB 5, (D) B1, (F) M1, EN
1021/1-2



YN009



YN076



YN079



YN086



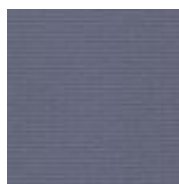
YN145



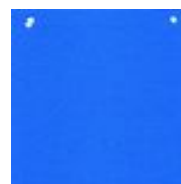
YN148



YN200



YN206



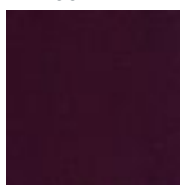
YN208



YN209



YN210



YN204

MECAMED

F

Složení/composition:
89% PVC, 11% Polyester

Váha/weight: 640 g/lm

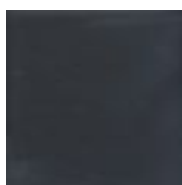
Šířka/width: 140 cm

Oděruvzdornost/abrasion resistance:
Martindale 50 000 cycles

Ohnivzdornost/flammability:
EN ISO1021-1, EN ISO 1021-2

Vlastnosti/features:
Antibakteriální
úprava/antibacterialProtection

Odolnost alkoholu/resistance to
alcohol



M110



M800



M2100



M5450



M6022



M7608

VZORNÍK POTAHOVÝCH LÁTEK

VALENCIA

F

Složení/composition:

Topcoat: 100% Vinyl, Backing:
100%Polyester

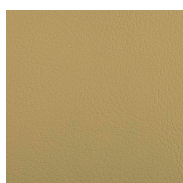
Váha/weight: 650 g/m2

Šířka/width: 137 cm

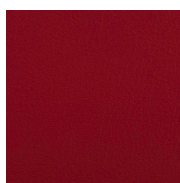
Oděruvzdornost/abrasion resistance:
Martindale 300 000 cycles

Stálobarevnost na světle/light
fastness: 7 DIN 54004/NTC 1479

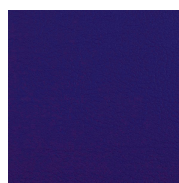
Ohnivzdornost/flammability: NF P 92-
503/M2, BS 5852 CRIB 5, DIN 4102
B2, EN 2021 Part 1&2



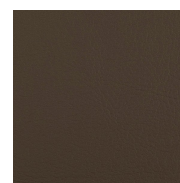
V1050



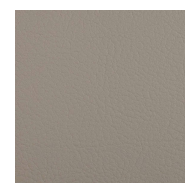
V2074



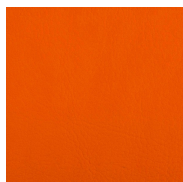
V3067



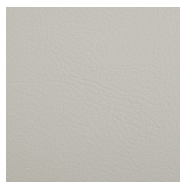
V4041



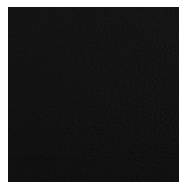
V4045



V6019



V8032



V9035

VENA

P/V&F

Složení/composition:

11 % PU, 66 % PVC, 23% PES

Váha/weight: min 600 g/m2

Šířka/width: 140 cm

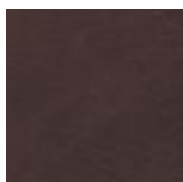
Oděruvzdornost/abrasion resistance:
Martindale 120 000 cycles

Stálobarevnost na světle/light
fastness: 7-8

Ohnivzdornost/flammability:
EN 1021/1-2, BS 5852:2006
Ignition source 5

Cena v kombinaci s kůží/Price
category for combination with leather:
P/V

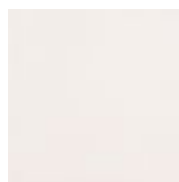
Cena pro židli v Vena/Price category
if only in Vena: F



V100



V1025



V5000

VZORNÍK POTAHOVÝCH LÁTEK

SILVERTEX

M

Složení/composition: PVC

Váha/weight: 685 g/lm

Šířka/width: 140 cm

Oděruvzdornost/abrasion resistance:
Martindale 100 000 cycles

Ohnivzdornost/flammability:
EN ISO 1021-1, EN ISO 1021-2

Vlastnosti/features:
Antibakteriální
úprava/antibacterialProtection

Odolnost vůči krvi, moči,
oleji/resistanceto blood, urine and oil



S0009



S2016



S3007



S4004



S5008



S9002

AQUARIUS

M

Složení/composition:
100% vlna/Pure New Wolle

Váha/weight: 370 g/m²

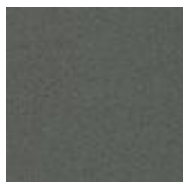
Šířka/width: 140 cm

Oděruvzdornost/abrasion resistance:
Martindale 50 000 cycles

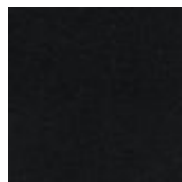
Stálobarevnost na světle/light
fastness: 5

Stálobarevnost v otěru/fastness
torubbing: 4

Ohnivzdornost/flammability:
EN 1021/1-2, BS 5852, BS 7176
(CRIB5)



JA001



JA002



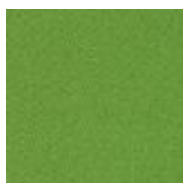
JA159



JA194



JA419



JA442

VZORNÍK POTAHOVÝCH LÁTEK

JET

M

Složení/composition:
100% Polyester

Váha/weight: 735 g/m

Šířka/width: 140 cm

Oděruvzdornost/abrasion resistance:
Martindale 100 000 cycles

(EN ISO 12947-2)

Stálobarevnost na světle/light
fastness: 6

(EN ISO 105-B02)

Stálobarevnost v otěru/fastness
torubbing:
4-5 (EN ISO 105-X12)

Žmolkování/pilling: 5
(EN ISO 12945-2)

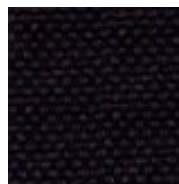
Ohnivzdornost/flammability:
C1, B1, M1, CRIB 5 (EN 1021/1-2)



L1014M



L1049



L2007M



L2036



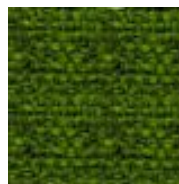
L4021



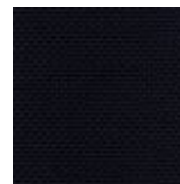
L5003



L7021



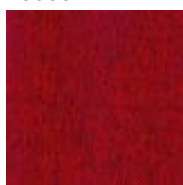
L7021M



L8017



L8033



L9302M



L9421M



L8027



L7025



L9804

OMEGA

M

Composition 100 % Polyester

Weight approx. grams lin. metre500

Width cm 160

Abrasion resistance rubs Martindale
(EN ISO 12947-2)100.000

Colour fastness to light Scale 1-8,
max. 8 - EN ISO 105-B025-7

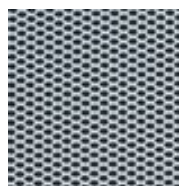
Environment 100% free of heavy
metals Oeko-Tex 100 certified



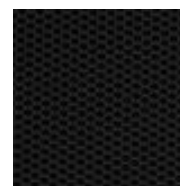
O60120



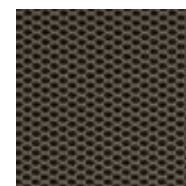
O60121



O60122



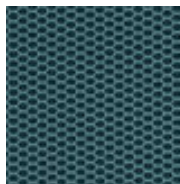
O60999



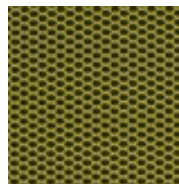
O61147



O65070



O66113



O68093

VZORNÍK POTAHOVÝCH LÁTEK

THEO @ NETS

M

Složení/composition:
100% Polyester

Váha/weight: 480 g/lm

Šířka/width: 160 cm

Oděruvzdornost/abrasion resistance:
Martindale 70 000 cycles

Stálobarevnost na světle/light
fastness: 5

Stálobarevnost v otěru/fastness to
rubbing: 4-5

Žmolkování/pilling: 5

Ohnivzdornost/flammability:
EN 1021 1&2



U60011



U60999



U68056



U63034



U64089



U66063



U65078

FENICE

M

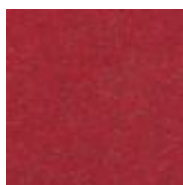
Složení/composition: 75% Wool -
25% Polyamide

Váha/weight: gr./mtl. 645 ± 5%

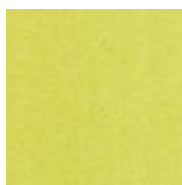
Šířka/width> tcm. 150 ± 5%

Oděruvzdornost/Abrasion:
(Martindale) UNI EN ISO 12497:2000
100.000 turns ± 20

Ohnivzdornost/Fire proof: Italia -
CLASSE 1 IM Using a standard FR
polyurethane foam 25kg/mcu
density. EN 1021 part 1-2



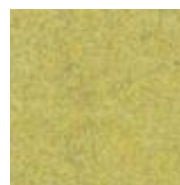
CU201



CU230



CU301



CU451



CU504



CU602



CU603

BLAZER

O

Složení/composition:
100% vlna/Pure New Wolle

Váha/weight: 430 g/lm

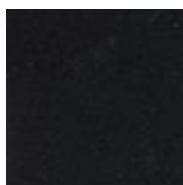
Šířka/width: 140 cm

Oděruvzdornost/abrasion resistance:
Martindale 50 000 cycles

Stálobarevnost na světle/light
fastness: 5

Stálobarevnost v otěru/fastness
torubbing: 4

Ohnivzdornost/flammability:
EN 1021/1-2, BS 5852, BS 7176
(CRIB5)



CUZ08



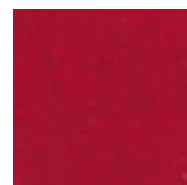
CUZ09



CUZ28



CUZ30



CUZ63



CUZ31



CUZ39



CUZ46

VZORNÍK POTAHOVÝCH LÁTEK

CRISP

O

Composition/Složení/Zusammensetzung
93% Wool 7% Polyamide

Weight/Váha/Gewicht 460 g/lm

Width/Šírka/Breite 140 cm

Abrasion
resistance/Oděruvzdornost/Scheuerfestigkeit
Martindale 200 000 cycles EN ISO 12947-2

Pilling/Žmolkování/Pilling 4-5 EN ISO 12945-2

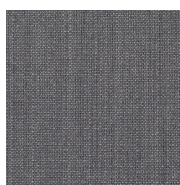
Light fastness/Stálobarevnost na
světlo/Lichtechtheit 5-7 EN ISO 105-B02

Fastness to rubbing/Stálobarevnost v
otěru/Reibechtheit 4-5 EN ISO 105x12

Flammability/Ohnivzdornost/Feuersicherung
EN 1021 1 & 2 BS 5852 0 & 1
Calif. Bull. 117, E



R4013



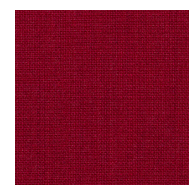
R4021



R4115



R4203



R4411

STYLE-STRIP

STYLE STRIP

Style/Style Strip
Složení/composition/Zusammensetzung:
100% Polyester

Váha/weight/Gewicht
530 g/lm

Šírka/width/Breite
150 cm

Oděruvzdornost/abrasion
resistance/Scheuerfestigkeit:
Martindale 80 000 cycles BS EN ISO 12947-2

Stálobarevnost na světlo/light
fastness/Lichtechtheit
5 BS EN ISO 105-B02

Stálobarevnost v otěru/fastness to
rubbing/Reibechtheit
4 - 5 EN ISO 105x12

Žmolkování/pilling/Pilling
4 - 5 BS EN ISO 12945-2

Ohnivzdornost/flammability/Feuersicherung
Önorm B 3825 EN 1021 1&2



A60011S



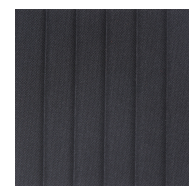
A64089S



A66063S



A68054S

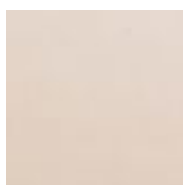


A60999S

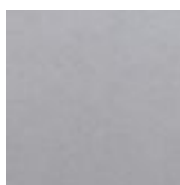
VZORNÍK POTAHOVÝCH LÁTEK

COMFORT + COM+

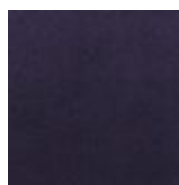
složení/composition: 88% Polyester/12% polyurethane, antistatická a ohnivzdorná vlákna na zadní straně, 37% recyklovaný polyester
váha/weight: 385 g/m
šířka/width: 140 cm
oděruvzdornost/abrasion resistance: Martindale 150 000 cycles (ISO 12947-2)
stálobarevnost na světle/light fastness: 5 (EN ISO 105-B02)
stálobarevnost v otěru/fastness to rubbing: 4 - 5
žmolkování/pilling: 5 (EN ISO 12945-2)
ohnivzdornost/flammability: Önorm B 3825 B1, BS 5852 source 0, EN 1021 1&2



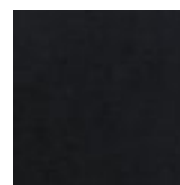
C61002



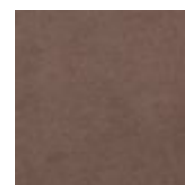
C60003



C66005



C0050



C0010

KŮŽE/LEATHER P

Složení/composition: 100 % kůže/Leather, hovězí/bovine

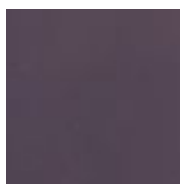
Tloušťka/thickness: 1-1,2 mm

Stálobarevnost na světle/light fastness: >6

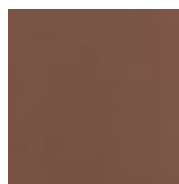
Původ/origin: European raw hides



P5110



P5250



P5400



P5000



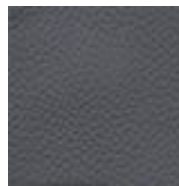
P5200



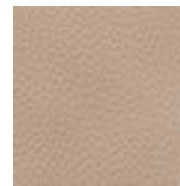
P1025



P100



P5310



P5320

PLUTO NETS

Složení/composition: 100% PES

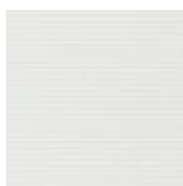
Váha/weight: min 360 g/m²

Šířka/width: 130 cm

Oděruvzdornost/abrasion resistance: Martindale 100 000 cycles

Stálobarevnost na světle/light fastness: 6 -8

Žmolkování/pilling: 4



Pluto WH



Pluto BL

VZORNÍK POTAHOVÝCH LÁTEK

PERMANENT SEATING

24/7
+

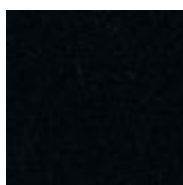
Složení/composition:
50% Polyamide, 33% Pure New
Wool, 10% Visil, 7% Viscose

Váha/weight: 610 g/lm

Šířka/width: 140 cm

Oděruvzdornost/abrasion resistance:
Martindale 500 000 cycles

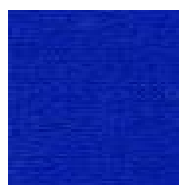
Ohnivzdornost/flammability:
EN 1021/1-2, (GB) CRIB 5



24/7 - černá



24/7 - modrá



24/7

ANTISTATIC

Složení/composition:
98% PL FR Trevira CS, 2% Carbonio

Váha/weight: 630 g/lm

Šířka/width: 140 cm

Oděruvzdornost/abrasion resistance:
Martindale 55 000 cycles

Ohnivzdornost/flammability:
(GB) CRIB 5, (D) B1, EN 1021/1-2



Antistatic

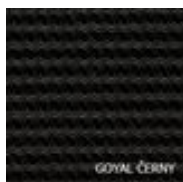
NETS

Složení/composition:
64% PL - 36% PA

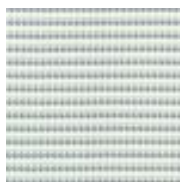
Váha/weight: 420 g/lm

Šířka/width: 140 cm

Oděruvzdornost/abrasion resistance:
Martindale 100 000 cycles



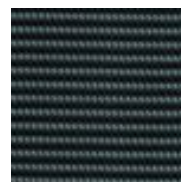
Goyal Black



GB1501



GB4501

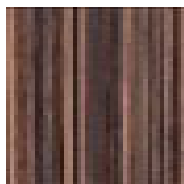


GB8501

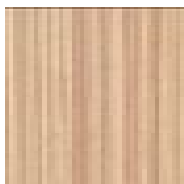
VZORNÍK POVRCHOVÝCH LÁTEK LAMINÁTY



LDS - DUB
SVĚTLÝ



LZD - ZEBRÁNO
TMAVÉ



LZL - ZEBRÁNO
SVĚTLÉ



LCH - BUK
ČOKOLÁDA